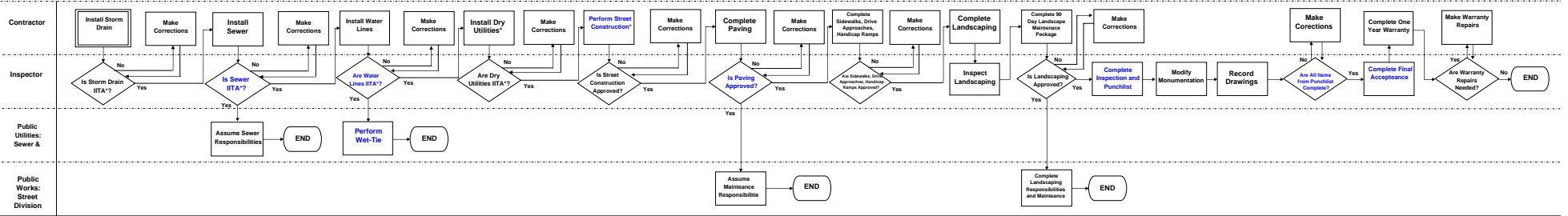


2.1.2 Process Construction



*ITA = Installed, Inspected, Tested, Approved
 *Sewer Line Testing includes Connection Testing, Pressure Testing, Video Inspection done by Sewer Maintenance Division
 *Water Line Testing includes Connection Testing, Pressure Testing, Obstruction Testing, Flush Testing, Backflow Testing
 *Dry Utilities includes Street Lighting, Gas, Cable, Signalization, etc.
 *Street Construction includes Subgrade Curb and Gutter Asphalt